

# Lake Erie Harmful Algal Bloom Forecast



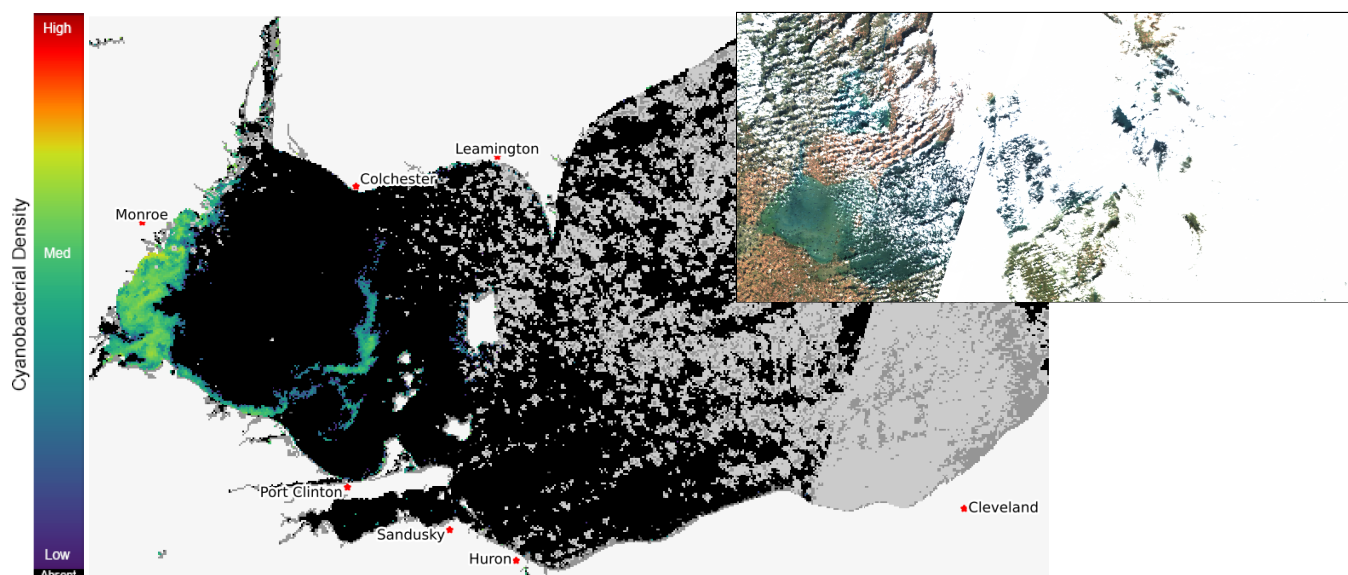
NATIONAL CENTERS FOR  
COASTAL OCEAN SCIENCE

## Imagery Analysis & Forecast - 2022-10-14

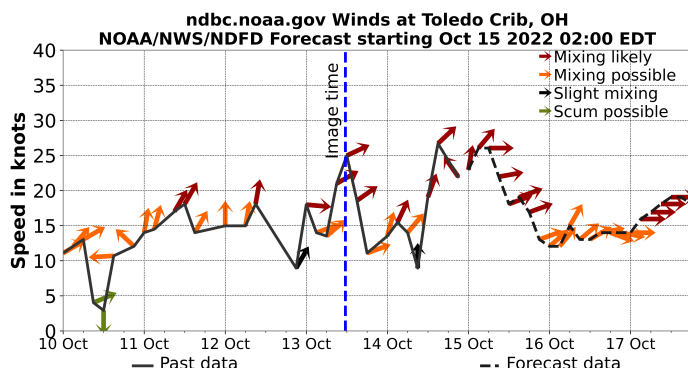
The *Microcystis* cyanobacteria bloom is present in western Lake Erie but cloud cover and winds prevent determining the area. The bloom extends alongshore from Stony Point, MI to Port Clinton, OH, with patches extending into western Lake Erie. Highest concentrations are observed in Maumee Bay. Sandusky Bay has a local bloom of cyanobacteria, which is persistent in most years.

No recent toxin data currently available. --S. Tomlinson 10/13

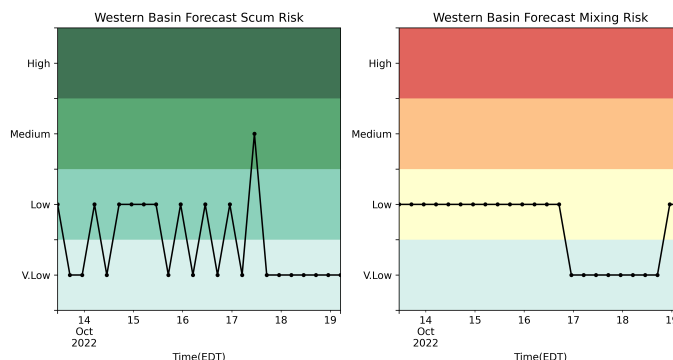
The past few days of imagery can be seen at [the HAB monitoring site](#). The Lake Erie Forecast is operated by the National Centers for Coastal Ocean Science. Contact [hab@noaa.gov](mailto:hab@noaa.gov) for technical Questions. Last Updated: 2022-10-14 11 PM EDT



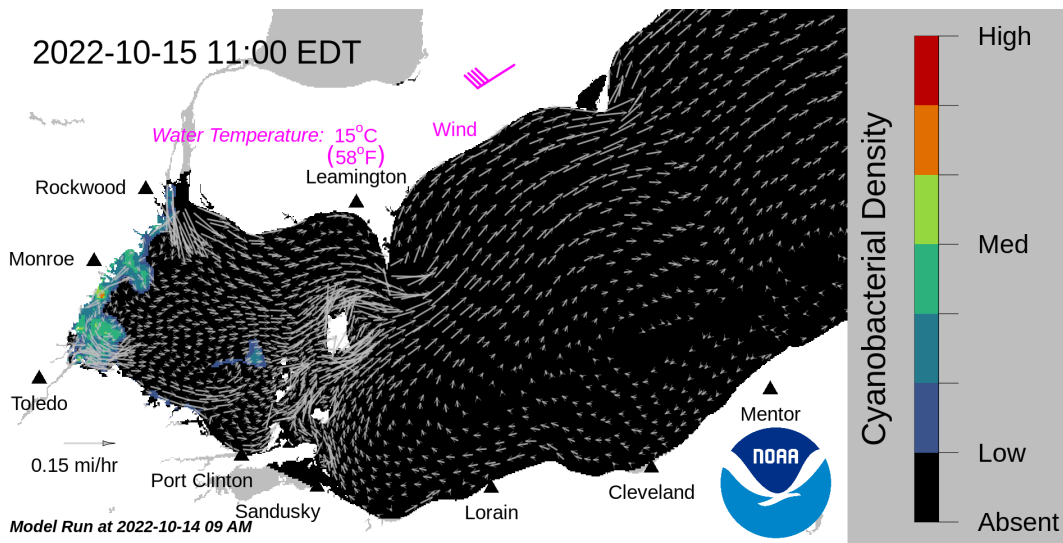
Current Lake Erie Sentinel-3 satellite imagery from the Ocean and Land Color Imager (OLCI) on Oct 13, 2022, showing bloom location and extent in the western basin. Grey indicates clouds or missing data. The estimated threshold of cyanobacteria detection is 20,000 cells/mL. Inset shows a truecolor image of the entire lake. Data derived from Copernicus Sentinel-3.



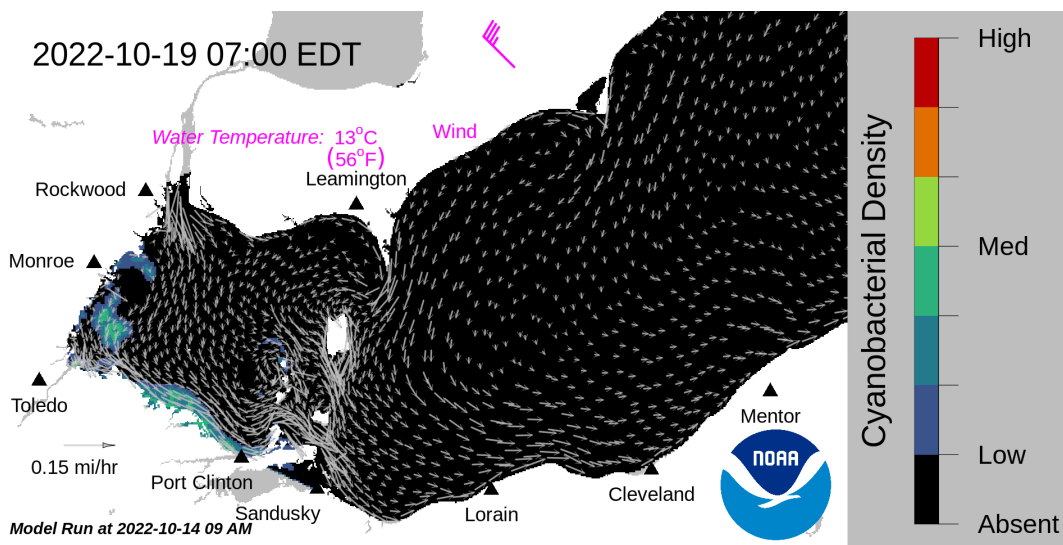
Wind speed and direction from ToledoCrib, OH. Blooms mix through water column at wind speeds > 15 knots.



Where the bloom is present in western Lake Erie, the potential risk of scum (left), and risk of mixing of the bloom down into the water column every 6 hours over the next 5 days.



Forecast surface bloom position for Oct 15, modeled from the last satellite image with water currents estimated from the Lake Erie Operational Forecast System (LEOFS). Potential for bloom movement is forecast in 3-dimensions with a hydrodynamic model using satellite imagery and currents. The modeled output does not contain clouds. Black indicates the absence of chlorophyll and gray indicates area with no data. The arrows show forecasted currents. Water temperature and winds (in magenta) are the averages for the western basin from the model.



Forecast surface bloom position for Oct 19. Black indicates the absence of chlorophyll and gray indicates area with no data. The arrows show forecasted currents. Water temperature and winds (in magenta) are the averages for the western basin from the model.

#### Additional resource:

- [Archived Lake Erie Forecasts](#)
- [More information about our bloom monitoring imagery](#)
- [FAQs - Frequently Asked Questions about cyanobacteria and the forecasts NOAA issues](#)
- [Contributors and Data Providers](#)
- [Lake Erie HAB Forecast Guide - User guide to help navigate the forecast products](#)



**NCCOS**

NATIONAL CENTERS FOR  
COASTAL OCEAN SCIENCE