

Lake Erie Harmful Algal Bloom Forecast



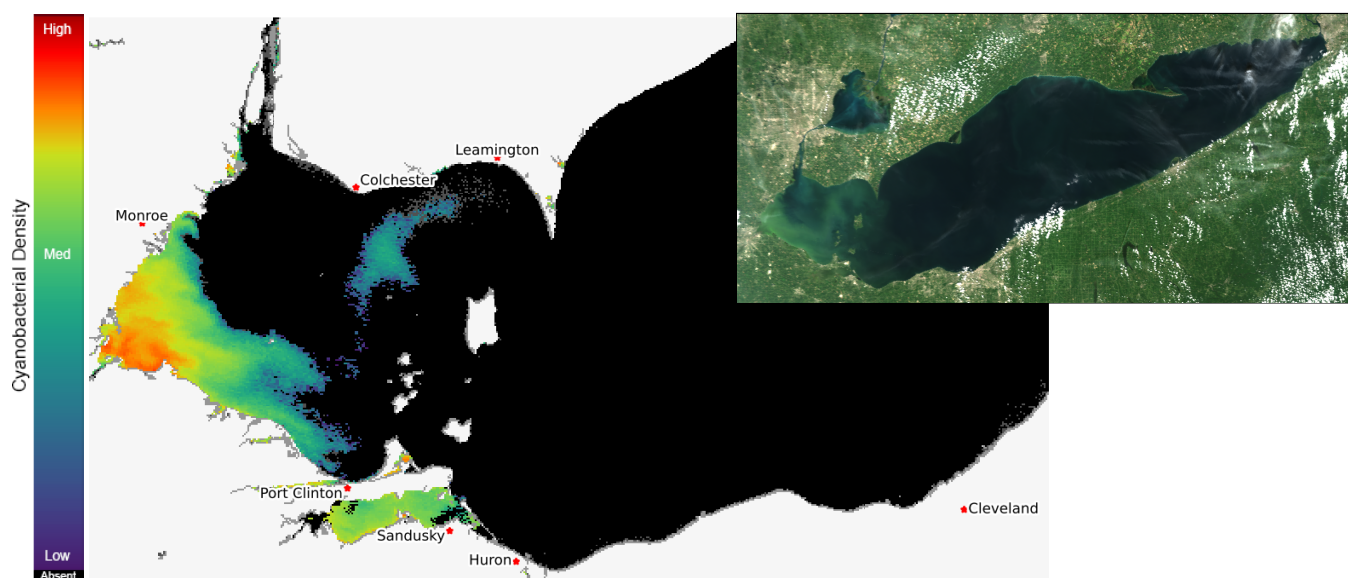
NATIONAL CENTERS FOR
COASTAL OCEAN SCIENCE

Imagery Analysis & Forecast - 2022-08-29

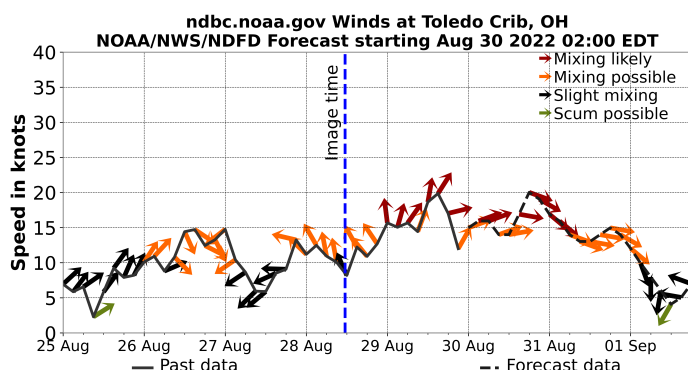
The *Microcystis* cyanobacteria bloom is present in western Lake Erie but cloud cover and winds prevent determining the area. According to the most recent satellite imagery, the densest bloom is between Monroe, MI and Maumee Bay. Some part of the bloom stretches north to Stony Point, MI and east alongshore to Port Clinton, OH. Sandusky Bay has a local bloom of cyanobacteria, which is persistent in most years.

Toxins have been detected above the recreational limit. They can be highly concentrated in scums! If you see scum, keep your pets and yourself out of the water. In the satellite imagery or bloom forecast position products, any areas that are orange or red are likely to have scum, especially during calm winds, see Mixing Forecast product. --A. Hounshell 08/29

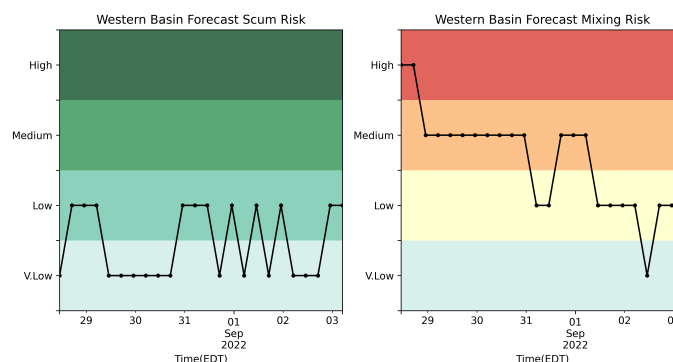
The past few days of imagery can be seen at [the HAB monitoring site](#). The Lake Erie Forecast is operated by the National Centers for Coastal Ocean Science. Contact hab@noaa.gov for technical Questions. Last Updated: 2022-08-29 11 PM EDT



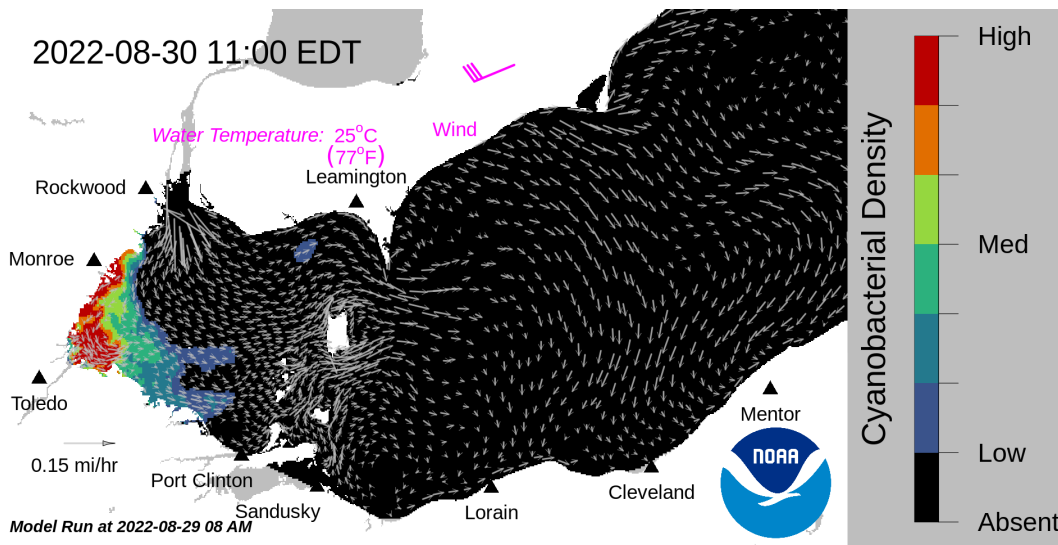
Current Lake Erie Sentinel-3 satellite imagery from the Ocean and Land Color Imager (OLCI) on Aug 28, 2022, showing bloom location and extent in the western basin. Grey indicates clouds or missing data. The estimated threshold of cyanobacteria detection is 20,000 cells/mL. Inset shows a truecolor image of the entire lake. Data derived from Copernicus Sentinel-3.



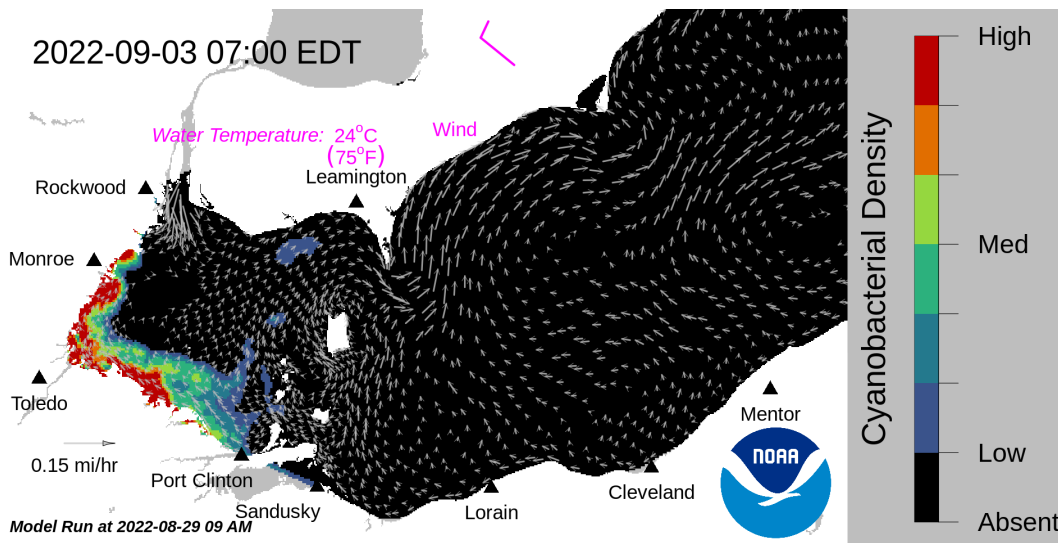
Wind speed and direction from ToledoCrib, OH. Blooms mix through water column at wind speeds > 15 knots.



Where the bloom is present in western Lake Erie, the potential risk of scum (left), and risk of mixing of the bloom down into the water column every 6 hours over the next 5 days. Mixing is weakest during mild winds.



Forecast surface bloom position for Aug 30, modeled from the last satellite image with water currents estimated from the Lake Erie Operational Forecast System (LEOFS). Potential for bloom movement is forecast in 3-dimensions with a hydrodynamic model using satellite imagery and currents. The modeled output does not contain clouds. Black indicates the absence of chlorophyll and gray indicates area with no data. The arrows show forecasted currents. Water temperature and winds (in magenta) are the averages for the western basin from the model.



Forecast surface bloom position for Sep 03. Black indicates the absence of chlorophyll and gray indicates area with no data. The arrows show forecasted currents. Water temperature and winds (in magenta) are the averages for the western basin from the model.

Additional resource:

- [Archived Lake Erie Forecasts](#)
- [More information about our bloom monitoring imagery](#)
- [FAQs - Frequently Asked Questions about cyanobacteria and the forecasts NOAA issues](#)
- [Contributors and Data Providers](#)
- [Lake Erie HAB Forecast Guide - User guide to help navigate the forecast products](#)