

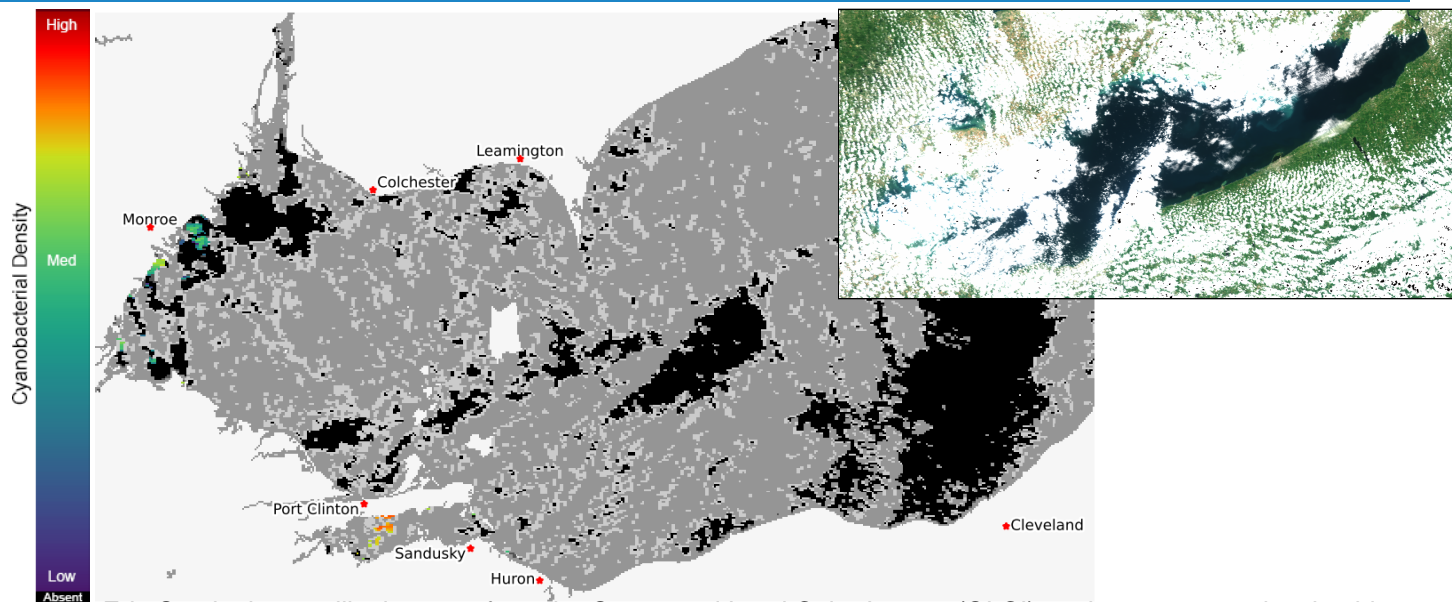
Lake Erie Harmful Algal Bloom Forecast

2024-06-29

Summary

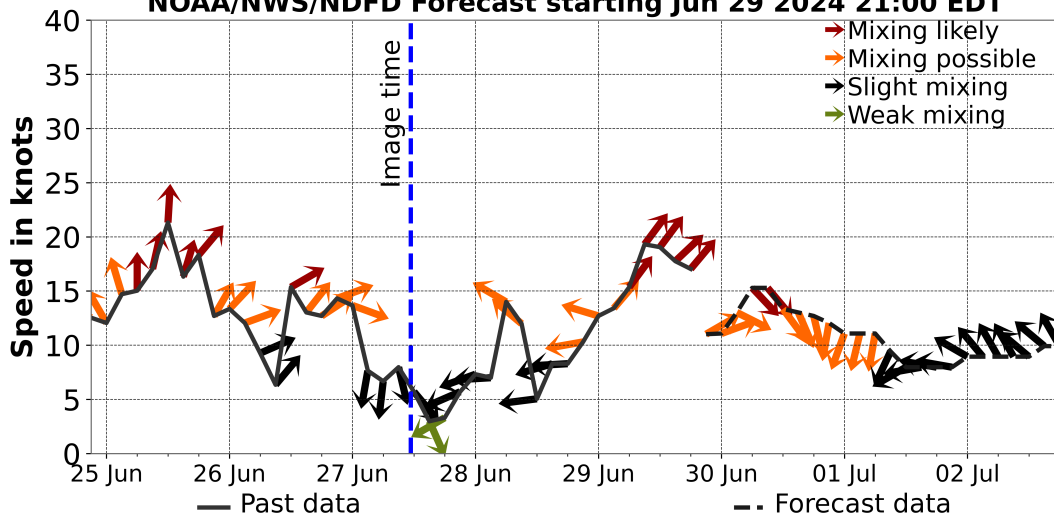
A small *Microcystis* bloom is observed in Northern Maumee Bay and offshore, just south of Monroe, MI. Sandusky Bay has a bloom of *Aphanizomenon*. We will continue to monitor conditions in western Lake Erie. --NCCOS HAB Forecasting Team 27 June 2024

The past few days of imagery can be seen at [the HAB monitoring site](#). The Lake Erie Forecast is operated by the National Centers for Coastal Ocean Science. Contact hab@noaa.gov for technical Questions. Last Updated: 2024-06-29 09 PM EST

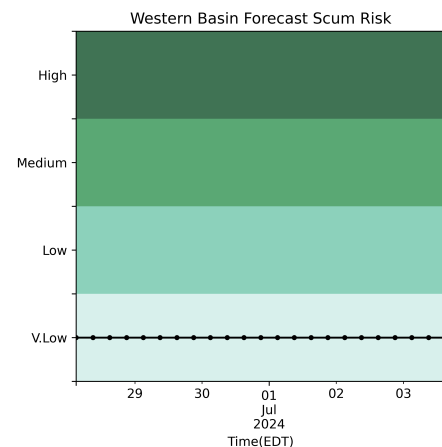


Current Lake Erie Sentinel-3 satellite imagery from the Ocean and Land Color Imager (OLCI) on Jun 27, 2024, showing bloom location and extent in the western basin. Grey indicates clouds or missing data. The estimated threshold of cyanobacteria detection is 20,000 cells/mL. Inset shows a truecolor image of the entire lake. Data derived from Copernicus Sentinel-3.

ndbc.noaa.gov Winds at South Bass Is, OH NOAA/NWS/NDFD Forecast starting Jun 29 2024 21:00 EDT



Wind speed and direction from SouthBassIs, OH. Blooms mix through water column at wind speeds > 15 knots.

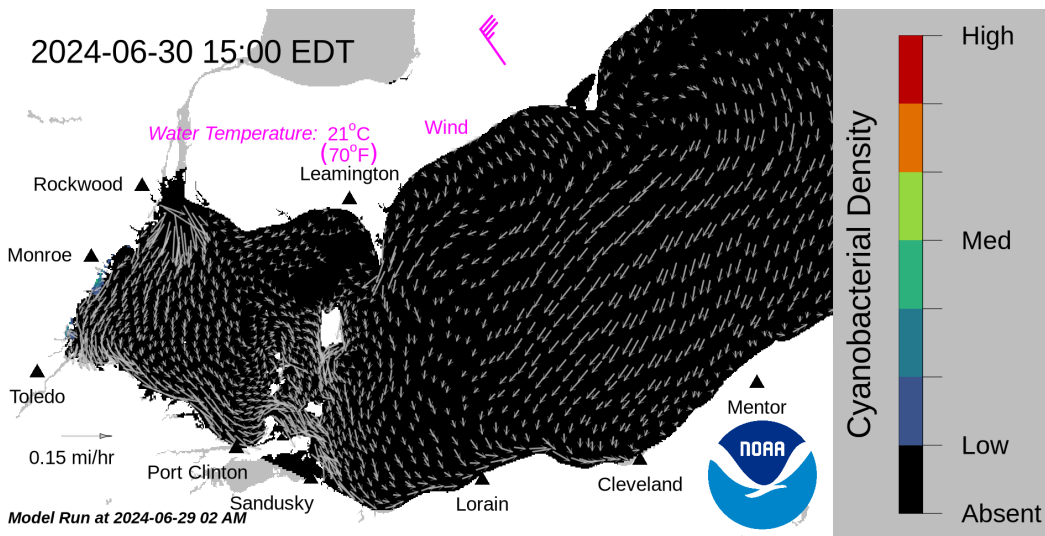


Where the bloom is present in western Lake Erie, the potential risk of scum.

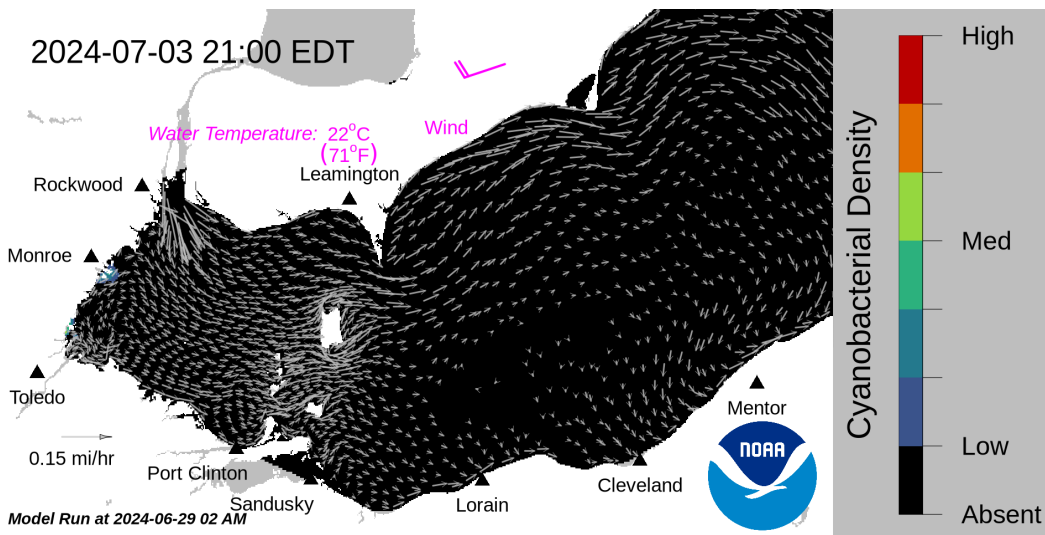
For more information visit: coastalscience.noaa.gov/science-areas/habs/hab-forecasts/lake-erie/

Lake Erie Harmful Algal Bloom Forecast

2024-06-29



Forecast surface bloom position for Jun 30, modeled from the last satellite image with water currents estimated from the Lake Erie Operational Forecast System (LEOFS). Potential for bloom movement is forecast in 3-dimensions with a hydrodynamic model using satellite imagery and currents. The modeled output does not contain clouds. Black indicates the absence of chlorophyll and gray indicates area with no data. The arrows show forecasted currents. Water temperature and winds (in magenta) are the averages for the western basin from the model.



Forecast surface bloom position for Jul 03. Black indicates the absence of chlorophyll and gray indicates area with no data. The arrows show forecasted currents. Water temperature and winds (in magenta) are the averages for the western basin from the model.

Additional resources:

- [Archived Lake Erie Forecasts](#)
- [More information about our bloom monitoring imagery](#)
- [FAQs - Frequently Asked Questions about cyanobacteria and the forecasts NOAA issues](#)
- [Contributors and Data Providers](#)
- [Lake Erie HAB Forecast Guide - User guide to help navigate the forecast products](#)
- [Lake Erie Hypoxia Forecast](#)

For more information visit: coastalscience.noaa.gov/science-areas/habs/hab-forecasts/lake-erie/