

Experimental Lake Erie Harmful Algal Bloom Bulletin

National Centers for Coastal Ocean Science and Great Lakes Environmental Research Laboratory

2 September 2014, Bulletin 19

Clouds have obscured most of the western basin since Friday, particularly the area including most of the bloom. We do not expect clear imagery for another day.

The bloom has not reached Pelee Point. In the western basin, the bloom remains within five miles of shore (hidden by clouds), and is not present further offshore.

Weak winds and clear skies on Wed may favor scum formation in some areas. Northeastward transport is likely on Thursday.

- Dupuy, Stumpf

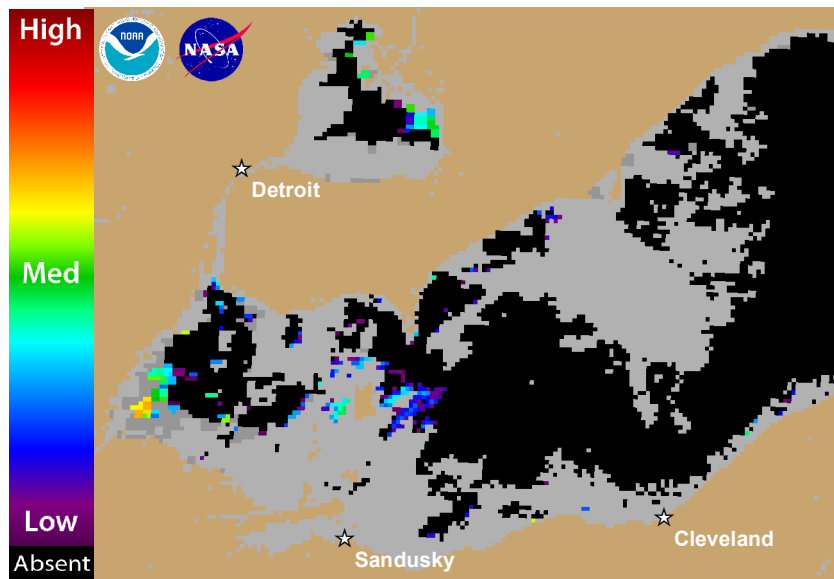
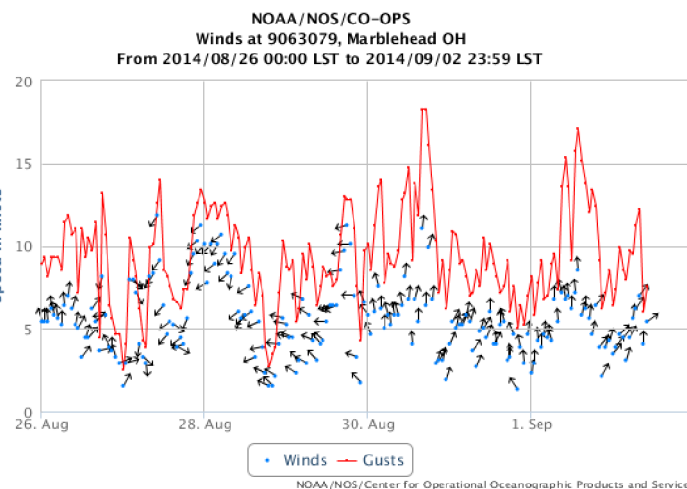
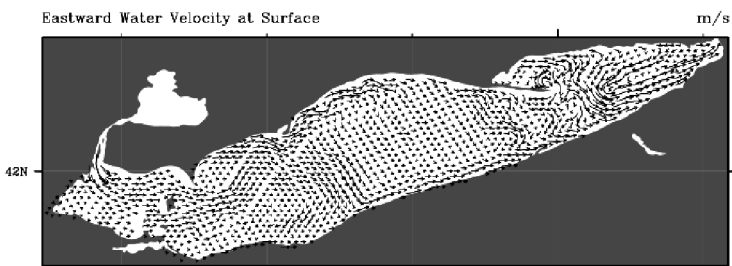


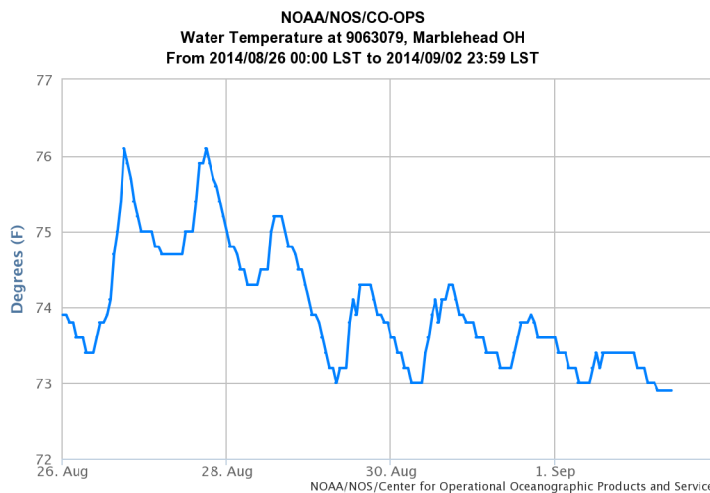
Figure 1. Cyanobacterial Index composite from NASA's MODIS-Aqua data collected 31 August & 1 September 2014. Grey indicates clouds or missing data. Black represents no cyanobacteria detected. Colored pixels indicate the presence of cyanobacteria. Cooler colors (blue and purple) indicate low concentrations and warmer colors (red, orange, and yellow) indicate high concentrations. The estimated threshold for cyanobacteria detection is 35,000 cells/mL.



Wind Speed, Gusts and Direction from Marblehead, OH. From: NOAA/Center for Operational Oceanographic Products and Services (CO-OPS). Note: 1 knot = 0.51444 m/s. Blooms mix through the water column at wind speeds greater than 7.7 m/sec (~ 15 knots).



Averaged forecasted currents from Great Lakes Coastal Forecasting System over the next 72 hours.



Water Temperature from Marblehead, OH. From: NOAA/Center for Operational Oceanographic Products and Services (CO-OPS).

Supported by the NASA Applied Sciences Health and Air Quality Program. Wind forecasts derived from NOAA/National Weather Service in Cleveland.

For more information and to subscribe to this bulletin, go to: <http://www.glerl.noaa.gov/res/waterQuality/?targetTab=habs>