

Experimental Lake Erie Harmful Algal Bloom Bulletin

National Centers for Coastal Ocean Science and Great Lakes Environmental Research Laboratory

3 November 2014, Bulletin 34

The cyanobacteria bloom appears to be gone from Lake Erie,

Toxins were not found in algae last week.

Some cyanobacteria may still be present in Sandusky Bay.

- Dupuy, Stumpf

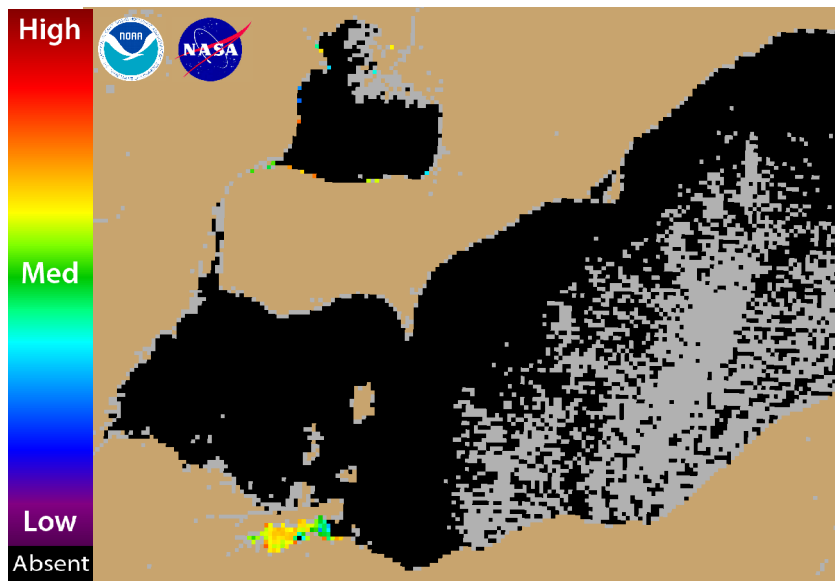
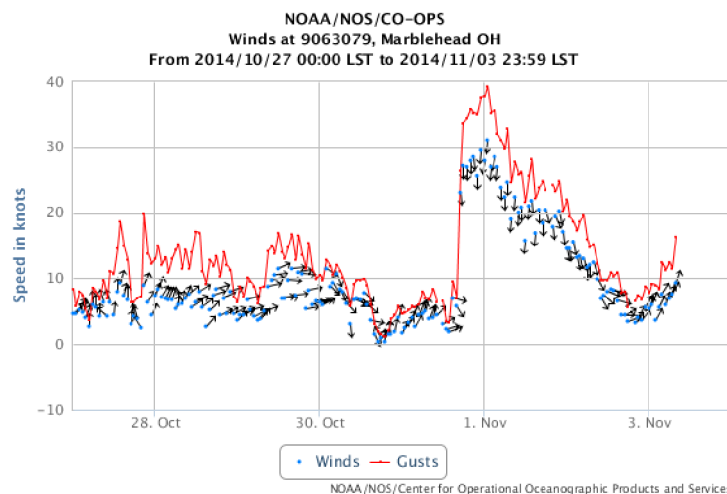
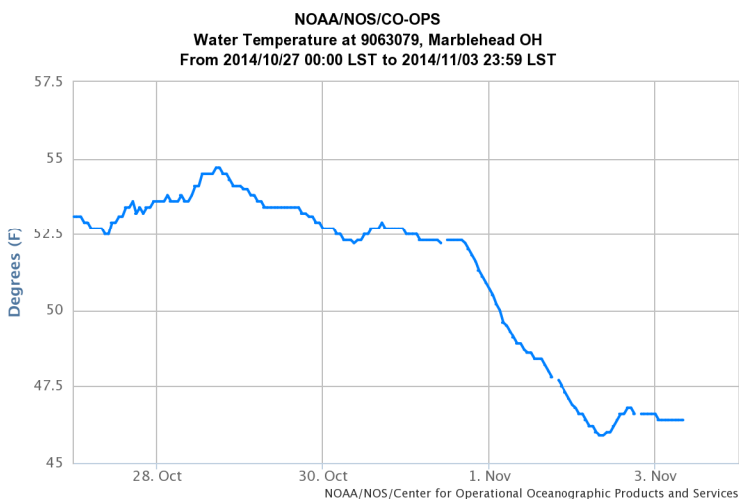


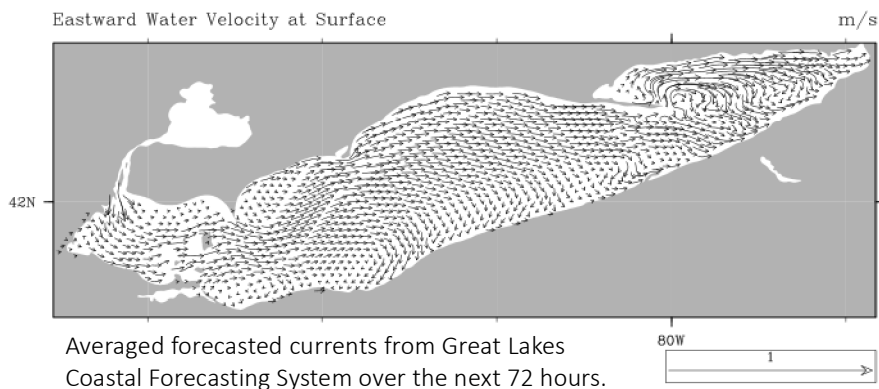
Figure 1. Cyanobacterial Index composite from NASA's MODIS-Aqua data collected 2 November 2014. Grey indicates clouds or missing data. Black represents no cyanobacteria detected. Colored pixels indicate the presence of cyanobacteria. Cooler colors (blue and purple) indicate low concentrations and warmer colors (red, orange, and yellow) indicate high concentrations. The estimated threshold for cyanobacteria detection is 35,000 cells/mL.



Wind Speed, Gusts and Direction from Marblehead, OH. From: NOAA/Center for Operational Oceanographic Products and Services (CO-OPS). Note: 1 knot = 0.51444 m/s. Blooms mix through the water column at wind speeds greater than 7.7 m/sec (~ 15 knots).



Water Temperature from Marblehead, OH. From: NOAA/Center for Operational Oceanographic Products and Services (CO-OPS).



Averaged forecasted currents from Great Lakes Coastal Forecasting System over the next 72 hours. Supported by the NASA Applied Sciences Health and Air Quality Program. Wind forecasts derived from NOAA/National Weather Service in Cleveland.

For more information and to subscribe to this bulletin, go to:
<http://www.glerl.noaa.gov/res/waterQuality/?targetTab=habs>