

Experimental Lake Erie Harmful Algal Bloom Bulletin

National Centers for Coastal Ocean Science and Great Lakes Environmental Research Laboratory

27 October 2014, Bulletin 33

High winds yesterday (15-20 knots) may have mixed bloom through the water column, lowering the surface concentration below detection limit.

There is now a minimal risk of impact from the remaining bloom.

- Dupuy, Stumpf

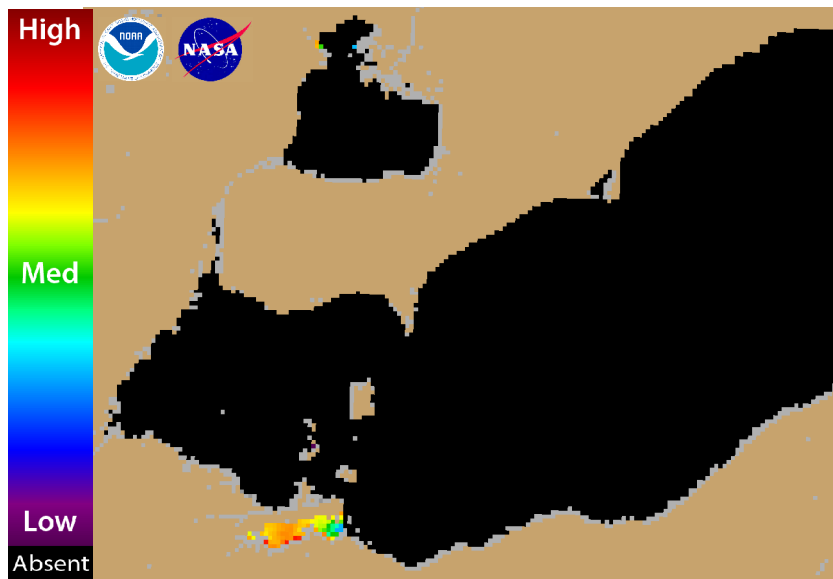
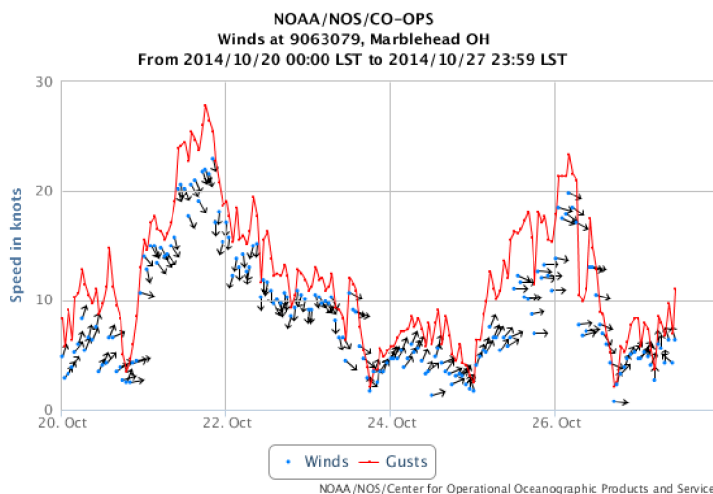
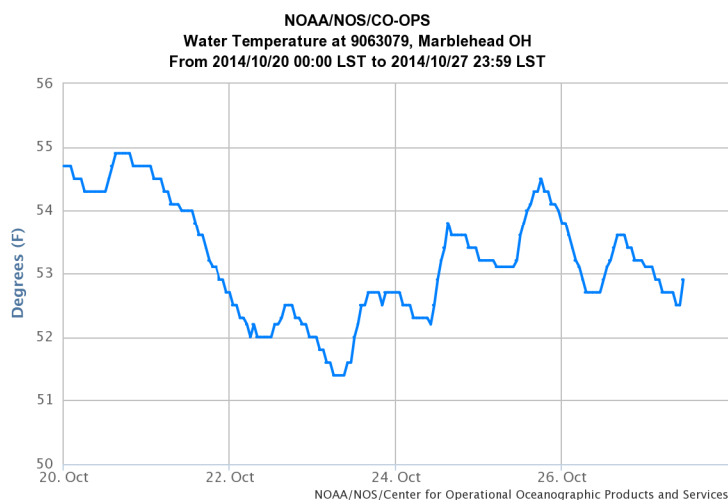


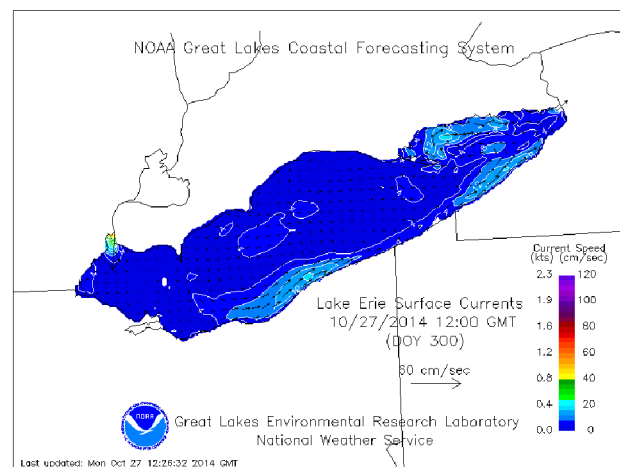
Figure 1. Cyanobacterial Index composite from NASA's MODIS-Aqua data collected 26 October 2014. Grey indicates clouds or missing data. Black represents no cyanobacteria detected. Colored pixels indicate the presence of cyanobacteria. Cooler colors (blue and purple) indicate low concentrations and warmer colors (red, orange, and yellow) indicate high concentrations. The estimated threshold for cyanobacteria detection is 35,000 cells/mL.



Wind Speed, Gusts and Direction from Marblehead, OH. From: NOAA/Center for Operational Oceanographic Products and Services



Water Temperature from Marblehead, OH. From: NOAA/Center for Operational Oceanographic Products and Services (CO-OPS).



Supported by the NASA Applied Sciences Health and Air Quality Program. Wind forecasts derived from NOAA/National Weather Service in Cleveland.

For more information and to subscribe to this bulletin, go to: <http://www.glerl.noaa.gov/res/waterQuality/?targetTab=habs>