



Experimental Lake Erie Harmful Algal Bloom Bulletin

National Centers for Coastal Ocean Science and Great Lakes Environmental Research Laboratory

9 August 2013; Bulletin 12

Microcystin has been measured in the in the bloom area (shown in yellow to red), with some areas having concentrations of 20 to 60 ug/L which exceeds the Ohio Recreational Use Advisory for both public health and contact. A Public Health Advisory went up at Maumee Bay State Park on Thursday. Microcystin was measured at 6.9 ug/L.

For more information about the Ohio Recreational Use Advisories go to:

<http://www.odh.ohio.gov/features/odhfeatures/algalblooms.aspx>

- Dupuy, Stumpf, Wynne

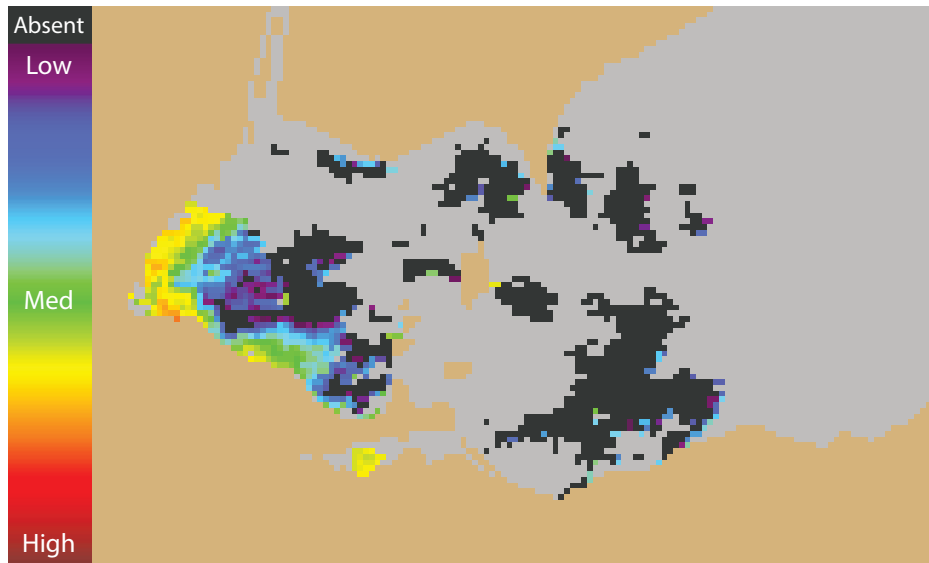
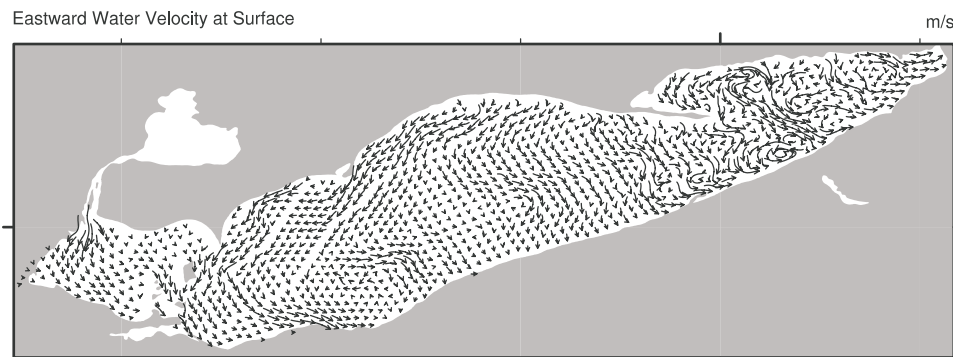
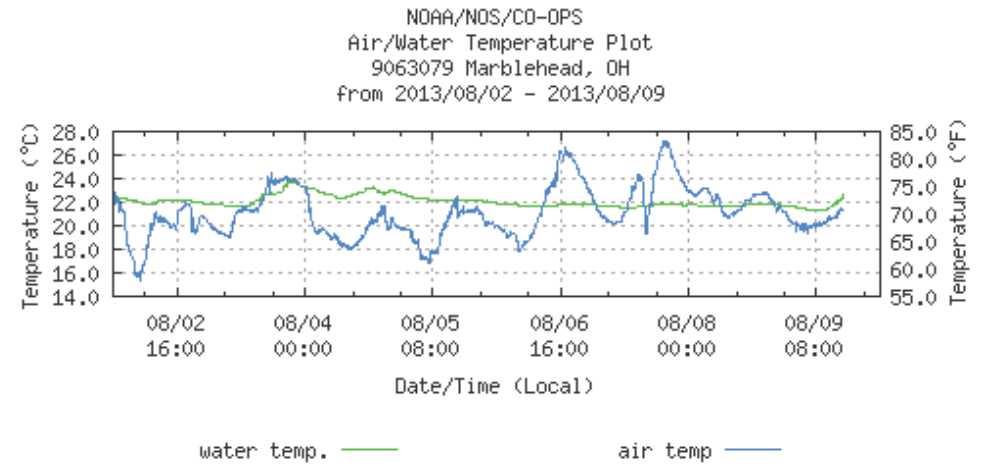


Figure 1. MODIS Cyanobacterial Index from 7 August 2013. Grey indicates clouds or missing data. Black represents no cyanobacteria detected. Colored pixels indicate the presence of cyanobacteria. Cooler colors (blue and purple) indicate low concentrations and warmer colors (red, orange, and yellow) indicate high concentrations. The estimated threshold for cyanobacteria detection is 35,000 cells/mL.

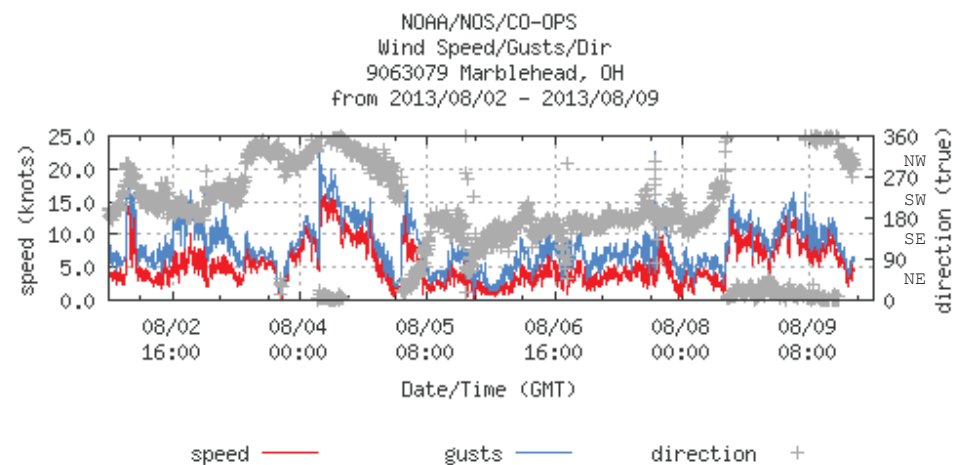
200401



Averaged forecasted currents from Great Lakes Coastal Forecasting System over the next 72 hours.



Air and Water Temperature from Marblehead, OH. From: NOAA/Center for Operational Oceanographic Products and Services (CO-OPS).



Wind Speed, Gusts and Direction from Marblehead, OH. From: NOAA/Center for Operational Oceanographic Products and Services (CO-OPS). Note: 1 knot = 0.51444 m/s. Blooms mix through the water column at wind speeds greater than 7.7 m/sec (~ 15 knots).

For more information and to subscribe to this bulletin, go to:

http://www.glerl.noaa.gov/res/Centers/HABS/lake_erie_hab/lake_erie_hab.html